



PEOPLEDOC TESTING ENVIRONMENT OFFERING

OPTIMISING HRSD PERFORMANCE THROUGH TESTING

Testing critical features and updates in a secure environment is an important component of keeping business operations running efficiently and smoothly. PeopleDoc's Testing Environment Offering helps keep HR Service Delivery running at peak performance while reducing errors. You can activate a test environment remotely from one of PeopleDoc's state-of-the-art data centers located around the world, and evaluate enhancements before pushing them live to your organisation.



Prepare for Enhancements

Test environments enable you to test PeopleDoc functionality and enhancements before these changes go live in the solution, to ensure the new features and upgrades work to best serve your people, and fit your unique business needs. You can understand how new features may alter your workflows, what a new integration might look like, train new HR team members, or even test PeopleDoc enhancements in a secure environment before making any changes to your account.



Leverage Comprehensive Services

Test environments are activated at a PeopleDoc data center and include hardware, software, electrical capacity, and technical support staff. Using a current duplicate of your organisation's PeopleDoc instance, the test environment incorporates your company's data in real-time, through an easily accessible online platform. This way, you can truly understand the impact to your organisation and ensure tighter controls over your data in advance.



Enjoy Convenient Access

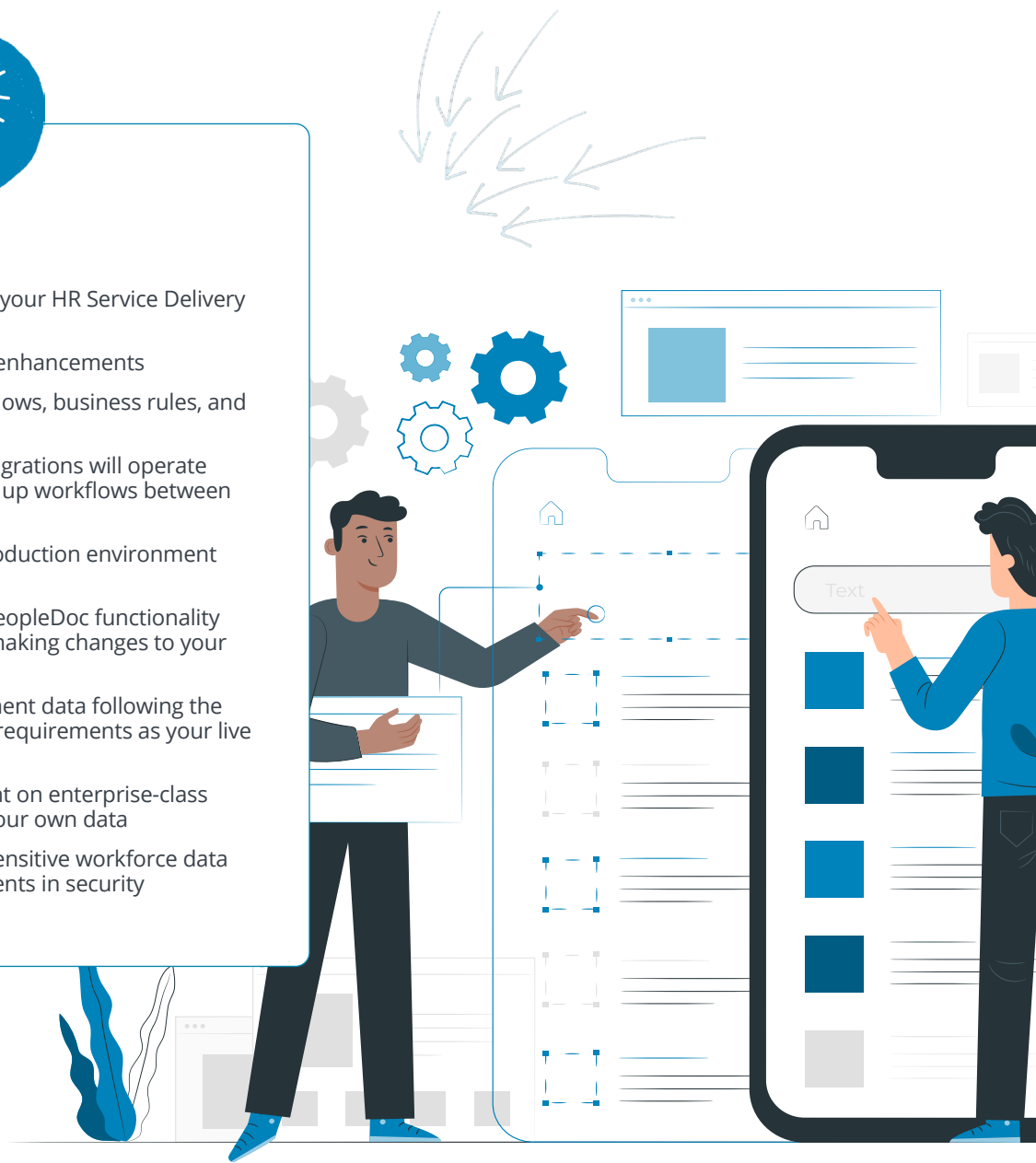
Test environment services are available year-round, giving you access to test new functionality and other changes whenever you need. They cover the entirety of innovative functionality offered by each module, including PeopleDoc Employee Case Management, Employee File Management, along with their value-added features, such as Advanced Document Generation and Analytics.





Key Benefits

- ▶ Evaluate modifications to your HR Service Delivery solution
- ▶ Assess new features and enhancements
- ▶ Analyse changes to workflows, business rules, and security setup
- ▶ Understand how new integrations will operate and how to effectively set up workflows between systems
- ▶ Apply changes to your production environment with confidence
- ▶ Train internal teams on PeopleDoc functionality and capabilities without making changes to your live solution
- ▶ House your test environment data following the same secure data-center requirements as your live PeopleDoc solution
- ▶ Run your test environment on enterprise-class servers configured with your own data
- ▶ Protect your company's sensitive workforce data with the latest advancements in security



PeopleDoc by Ultimate Software

PeopleDoc by Ultimate Software is committed to putting people first. The PeopleDoc HR Service Delivery platform helps HR teams upgrade the employee experience, improve HR agility, and ease compliance management.

PeopleDoc global cloud solutions provide employee case management, knowledge portal, process automation, employee file management, and eVault capabilities. Delivered 100% software as a service, PeopleDoc solutions integrate with a wide range of HR and enterprise systems and can be implemented in 8-12 weeks.

PeopleDoc is part of Ultimate Software, a leading global provider of cloud-based human capital management solutions. Known for its "People First" culture, Ultimate has ranked in the top 25 on Fortune's U.S.-based 100 Best Companies to Work For list since 2012, and #1 on Fortune's Best Workplaces in Technology list, in the "Large Companies" category, since 2016. Ultimate employs more than 5,600 professionals and serves more than 6,600 customers worldwide.

More information about PeopleDoc by Ultimate Software can be found at www.people-doc.co.uk.



www.people-doc.co.uk • contact.uk@people-doc.com